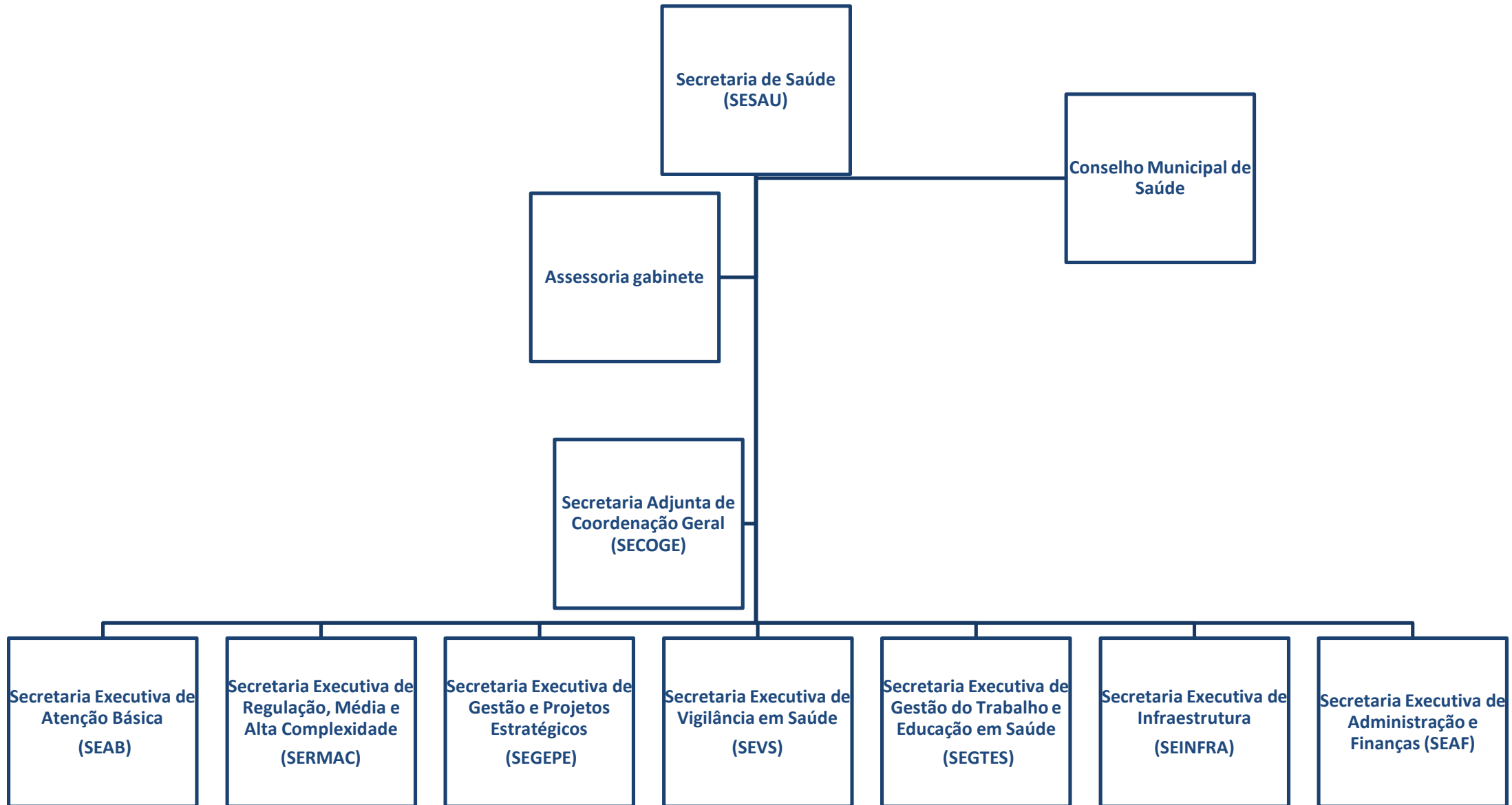
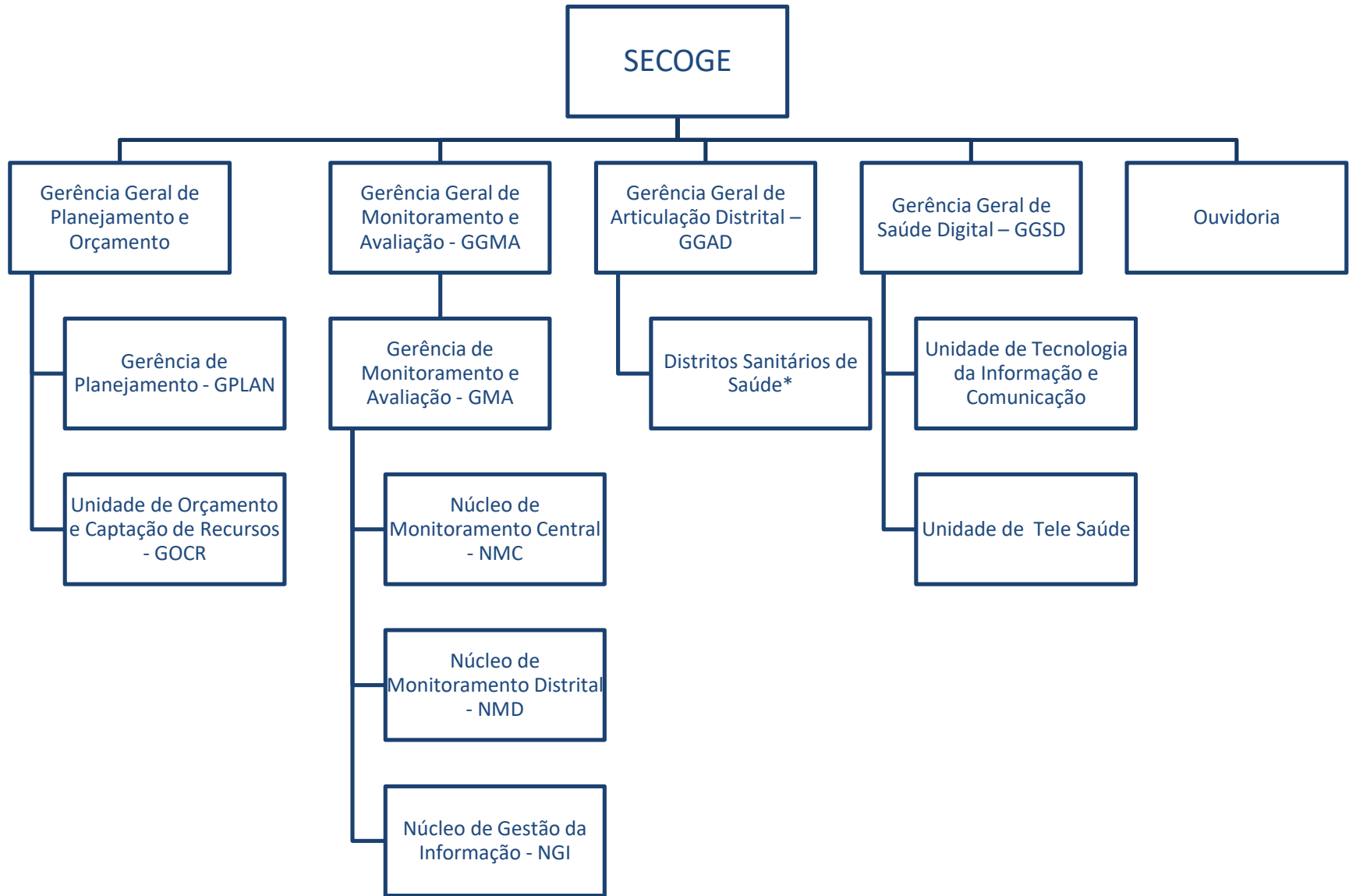
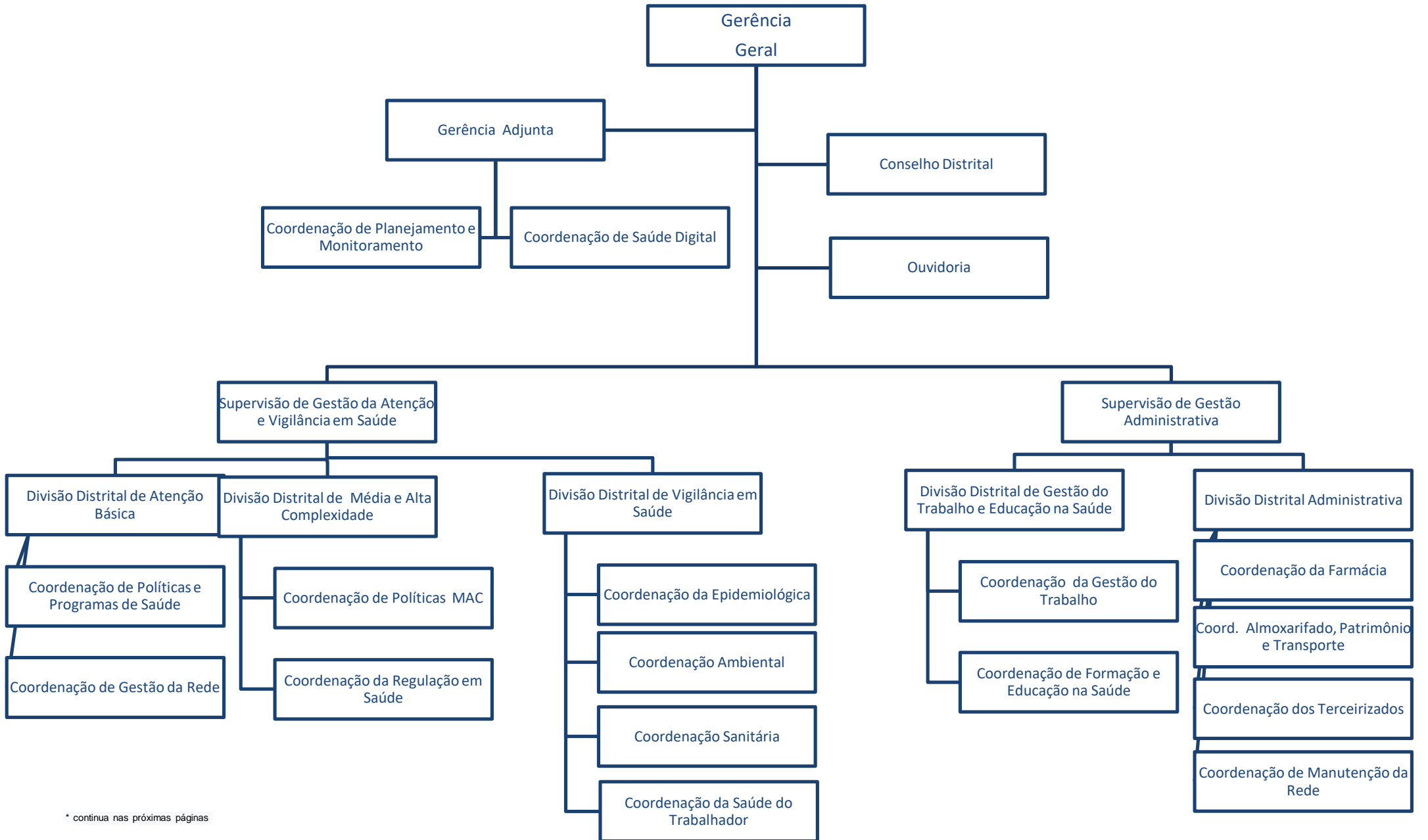


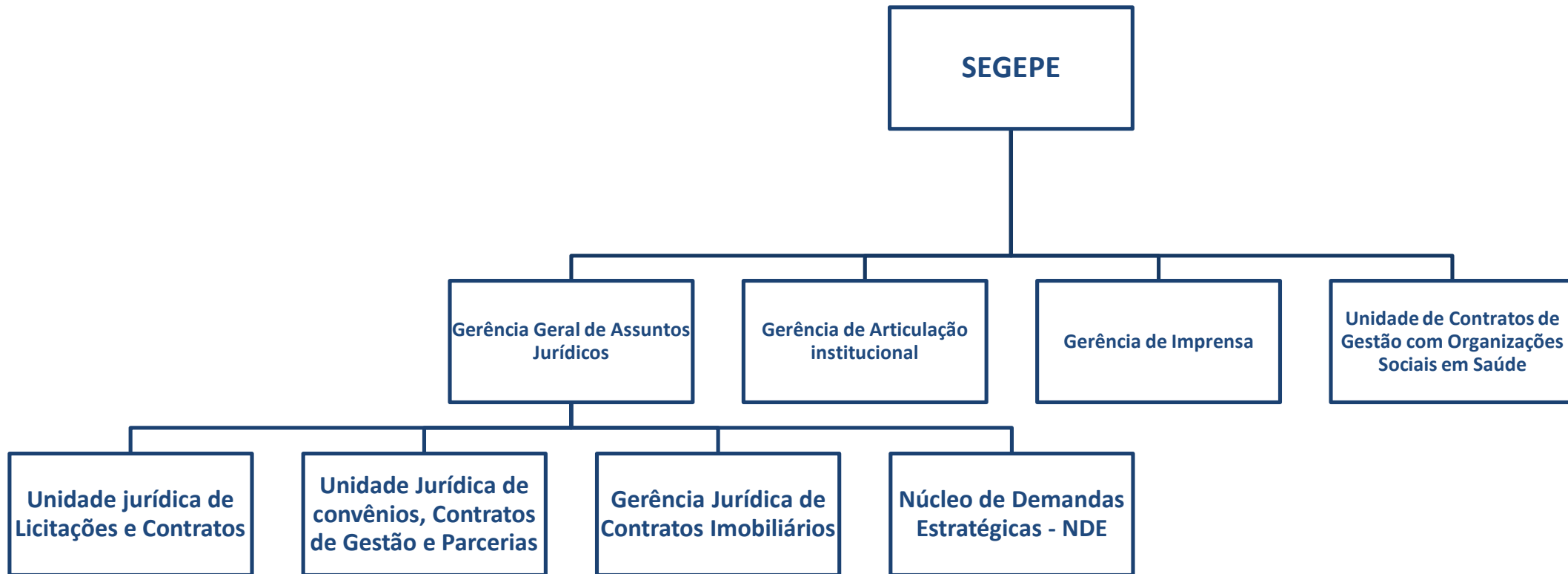
## SECRETARIA DE SAÚDE

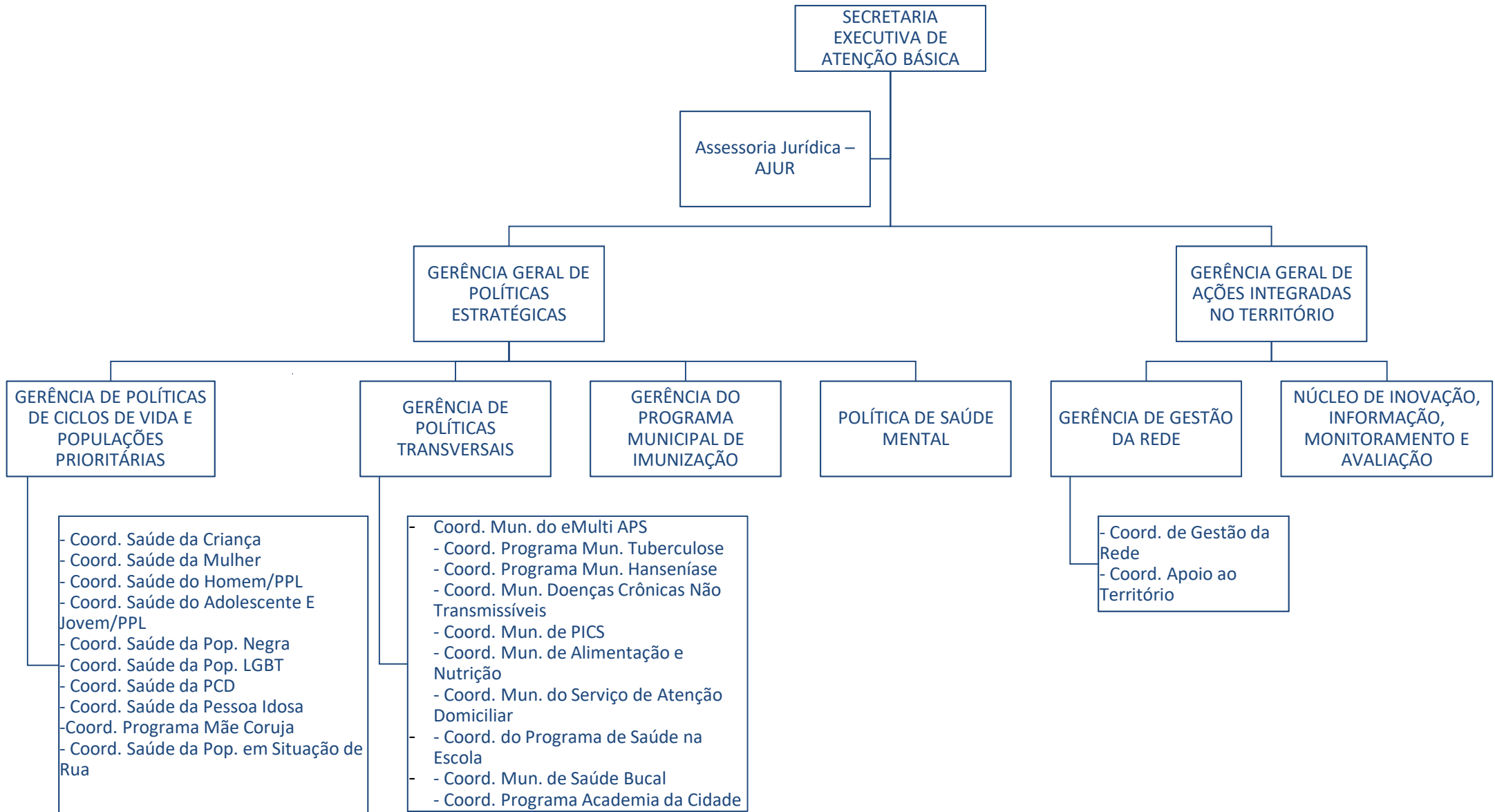


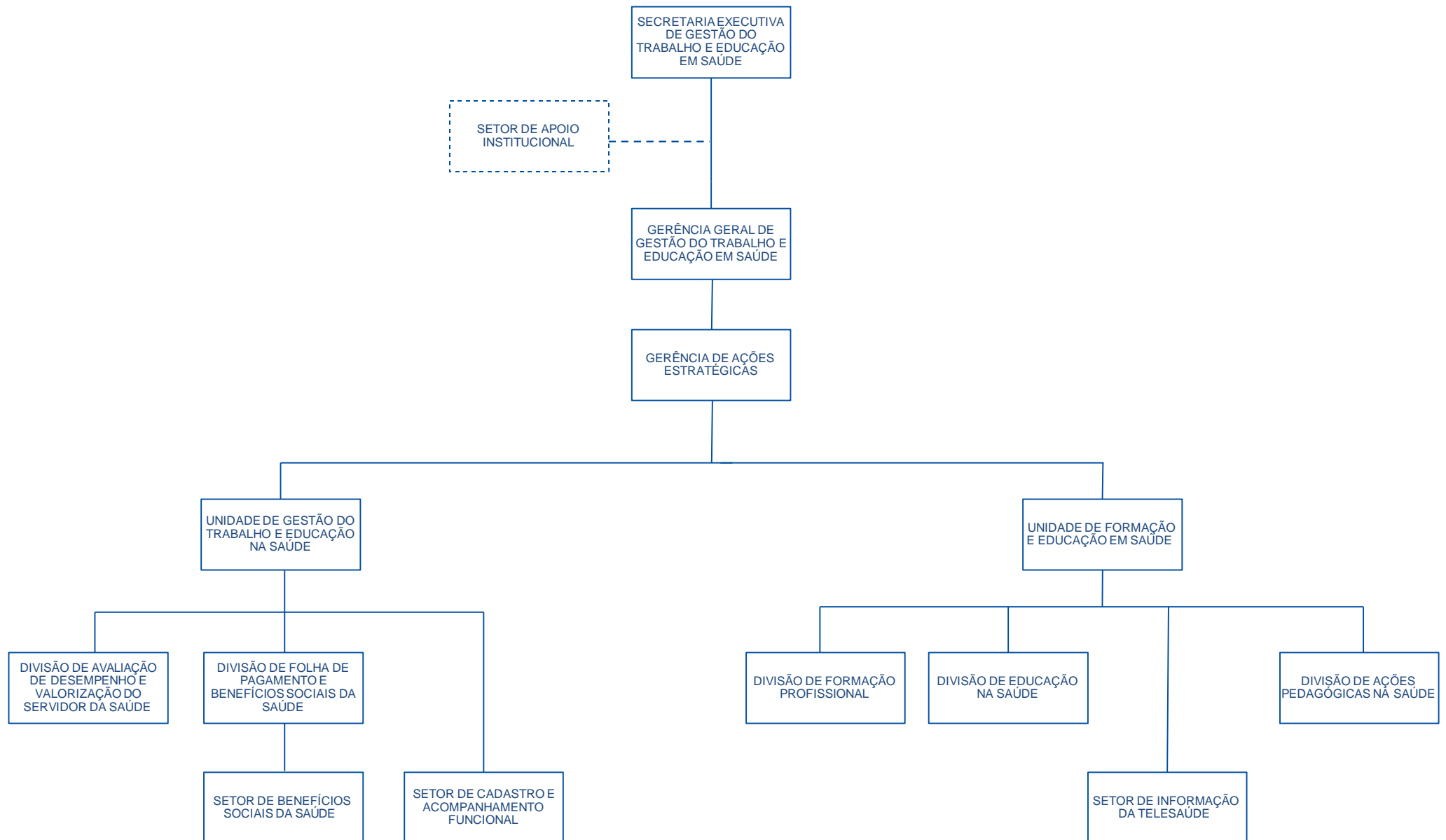


# GERÊNCIA GERAL DISTRITAL

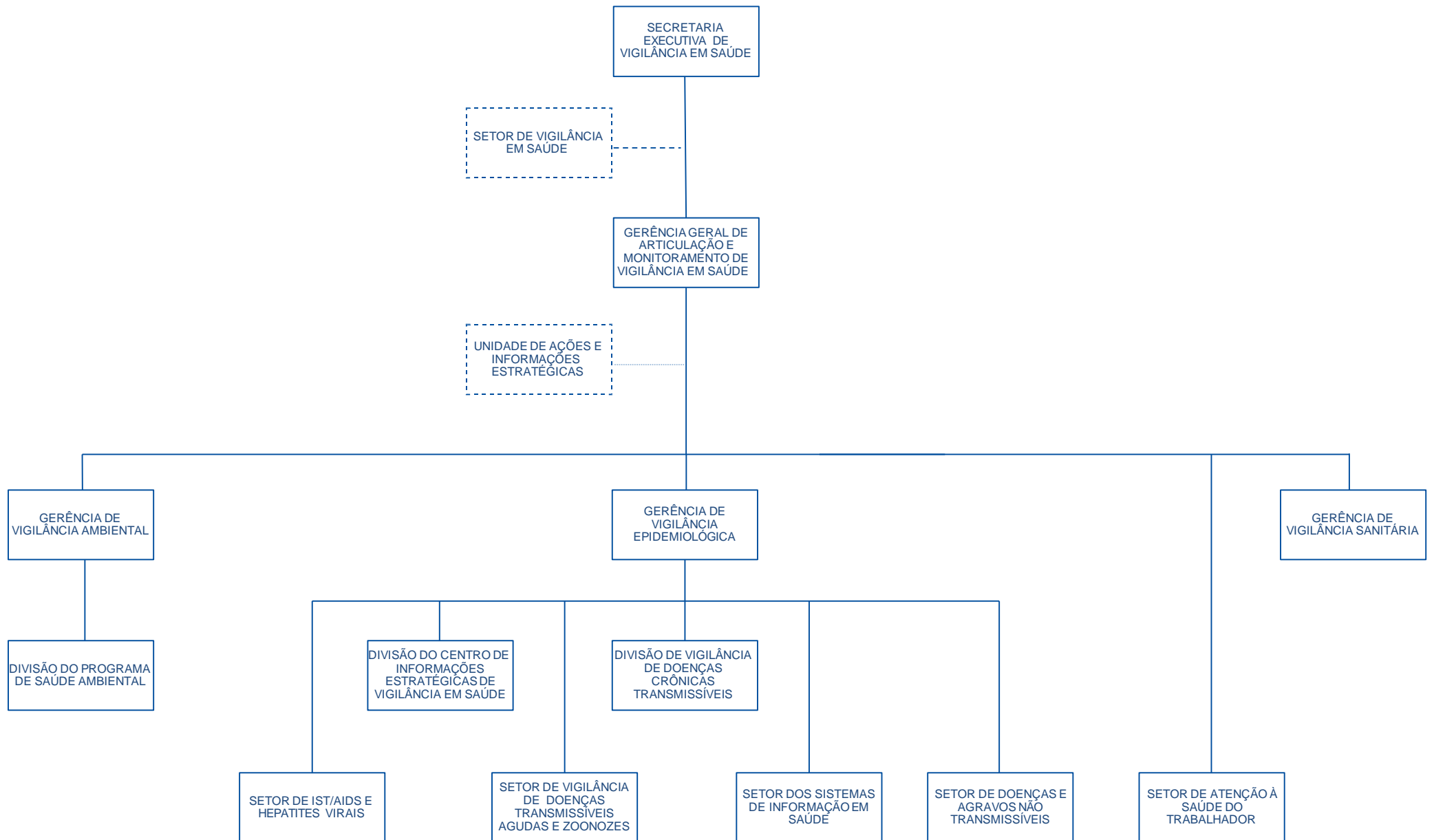




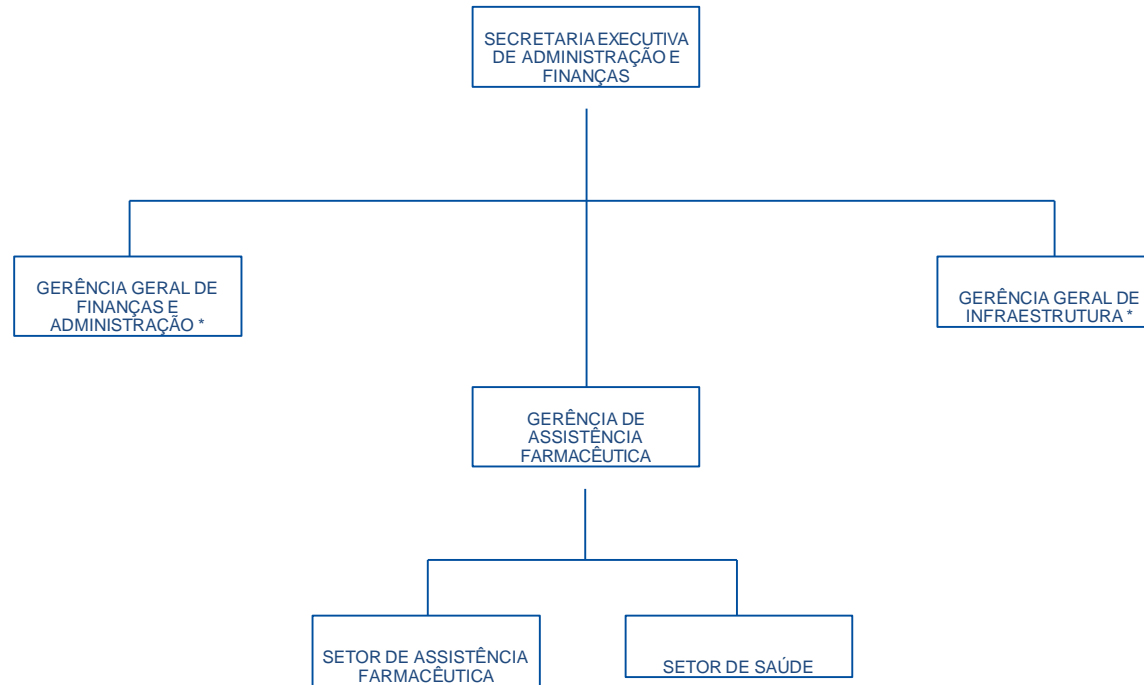




# SECRETARIA EXECUTIVA DE VIGILÂNCIA EM SAÚDE

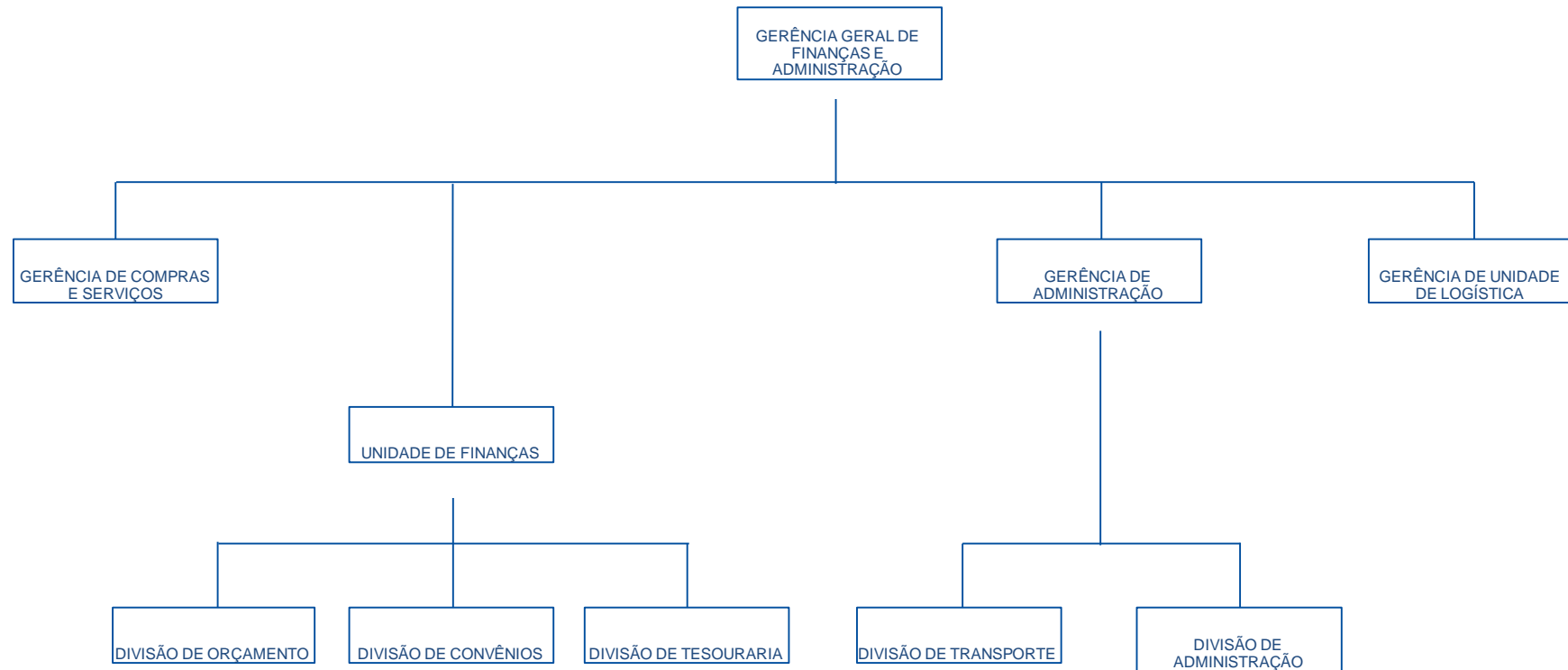


## SECRETARIA EXECUTIVA DE ADMINISTRAÇÃO E FINANÇAS

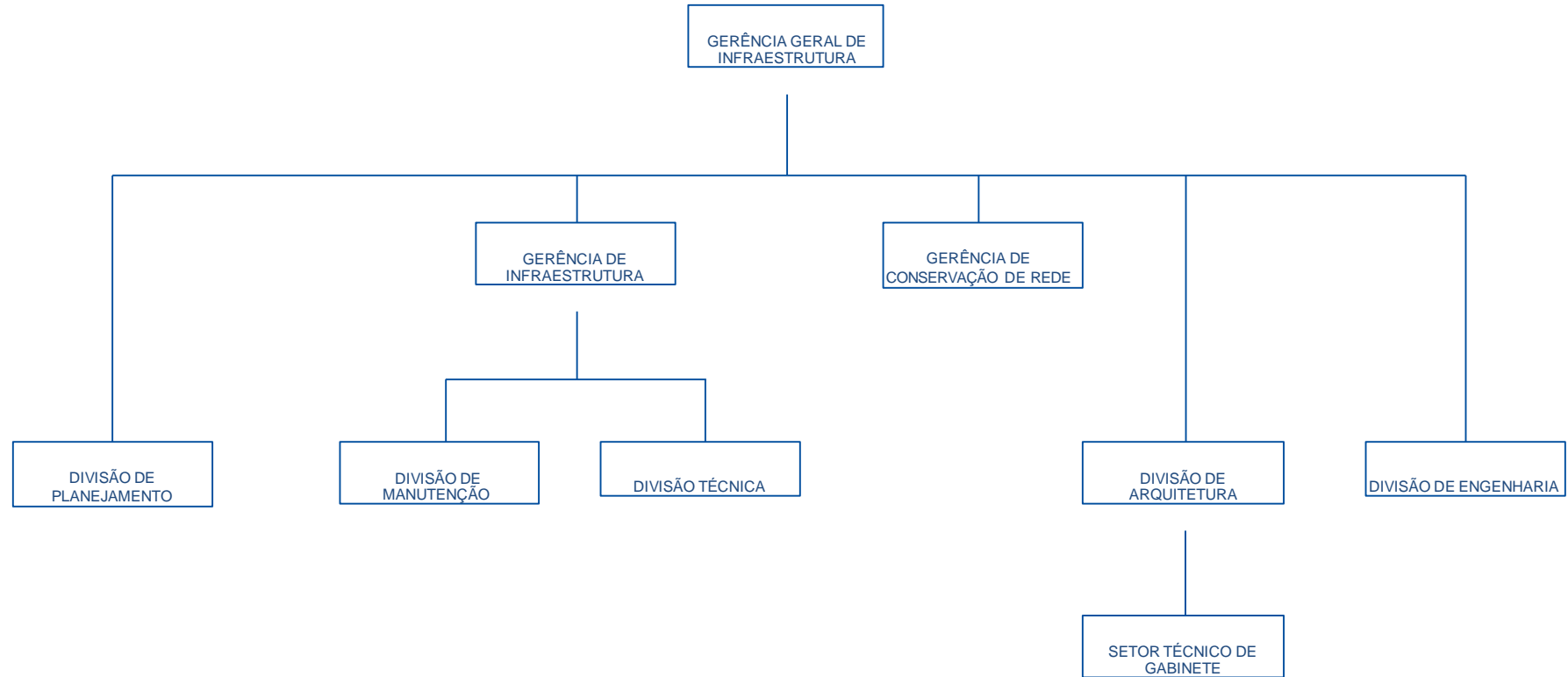


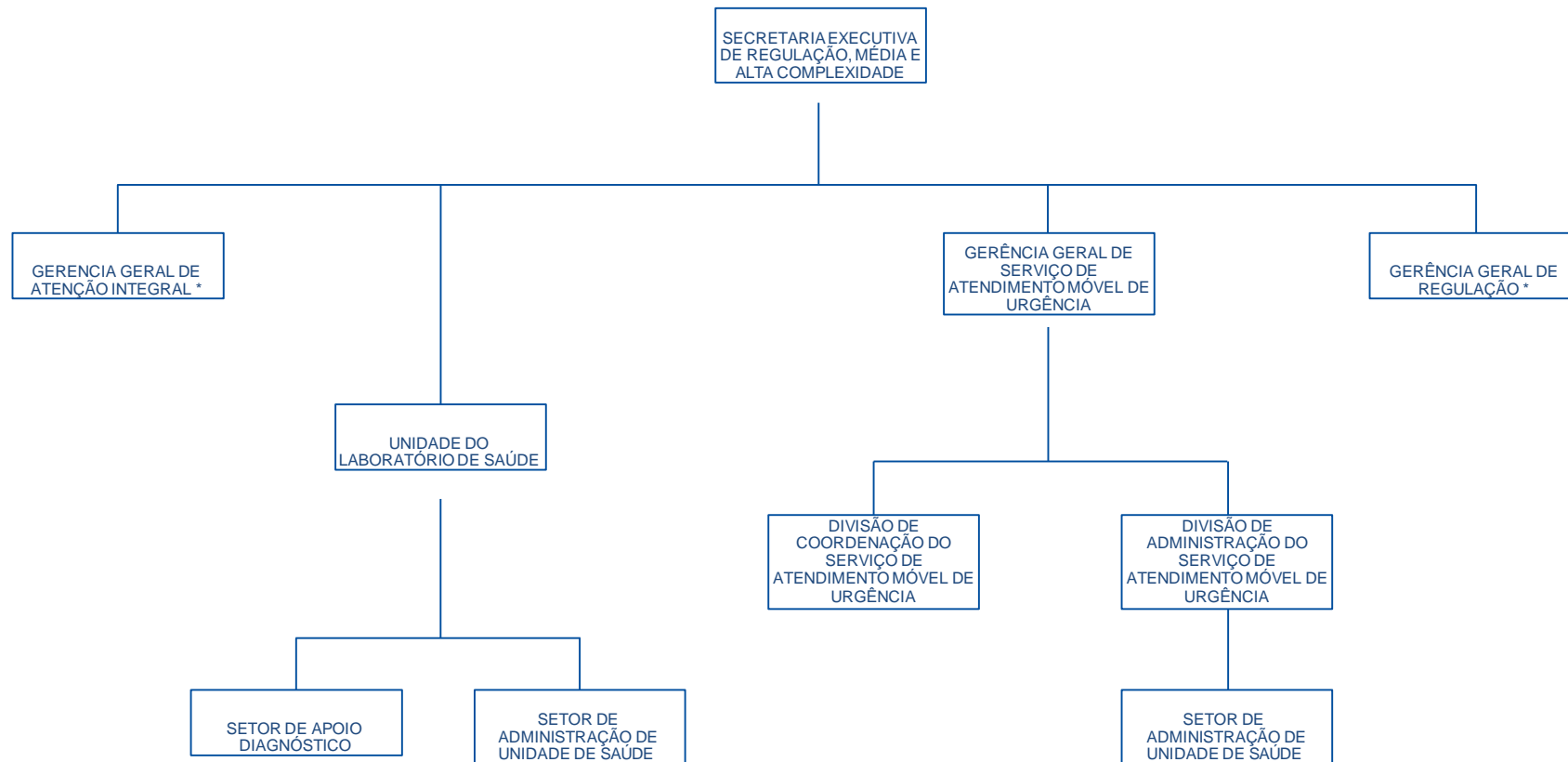


# GERÊNCIA GERAL DE FINANÇAS E ADMINISTRAÇÃO

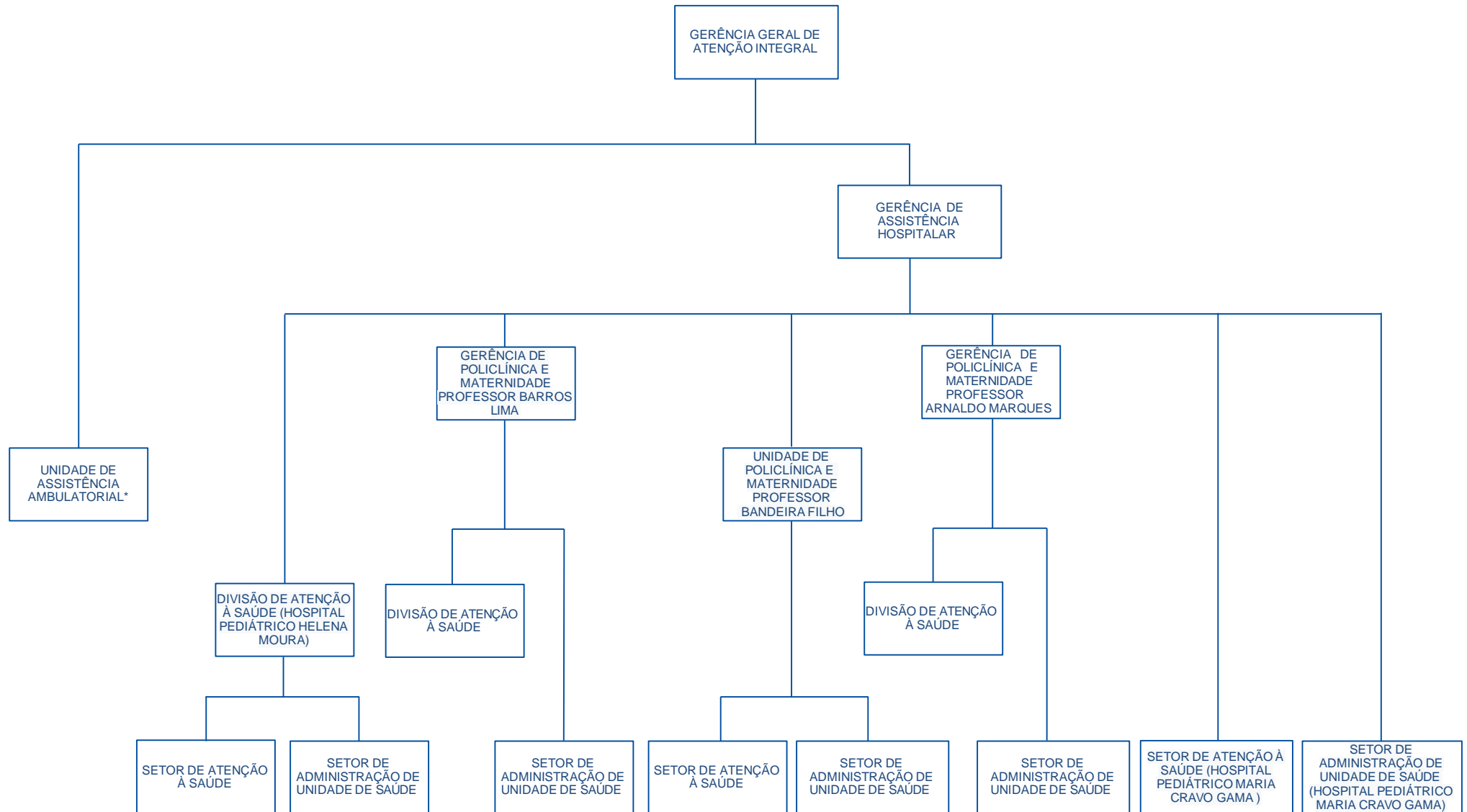


# GERÊNCIA GERAL DE INFRAESTRUTURA

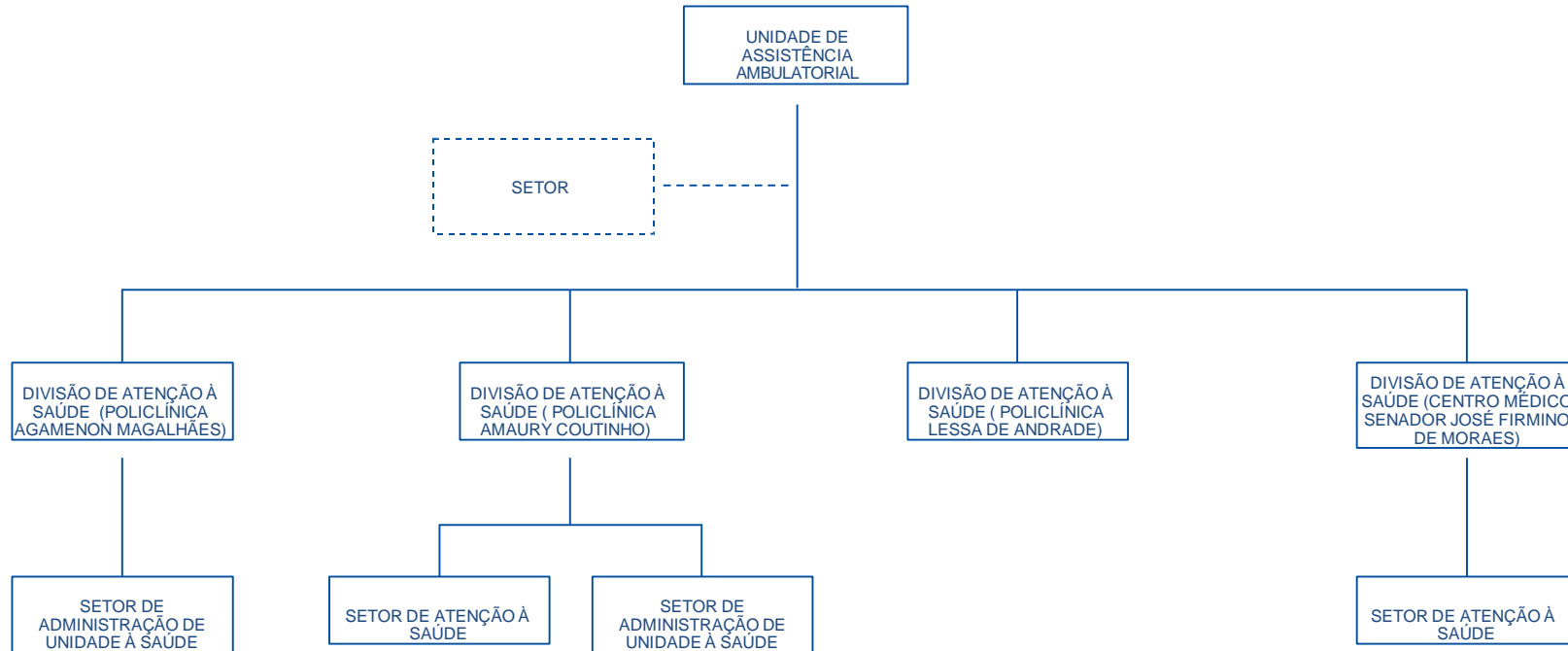




# GERÊNCIA GERAL DE ATENÇÃO INTEGRAL



## UNIDADE DE ASSISTÊNCIA AMBULATORIAL



# GERÊNCIA GERAL DE REGULAÇÃO

