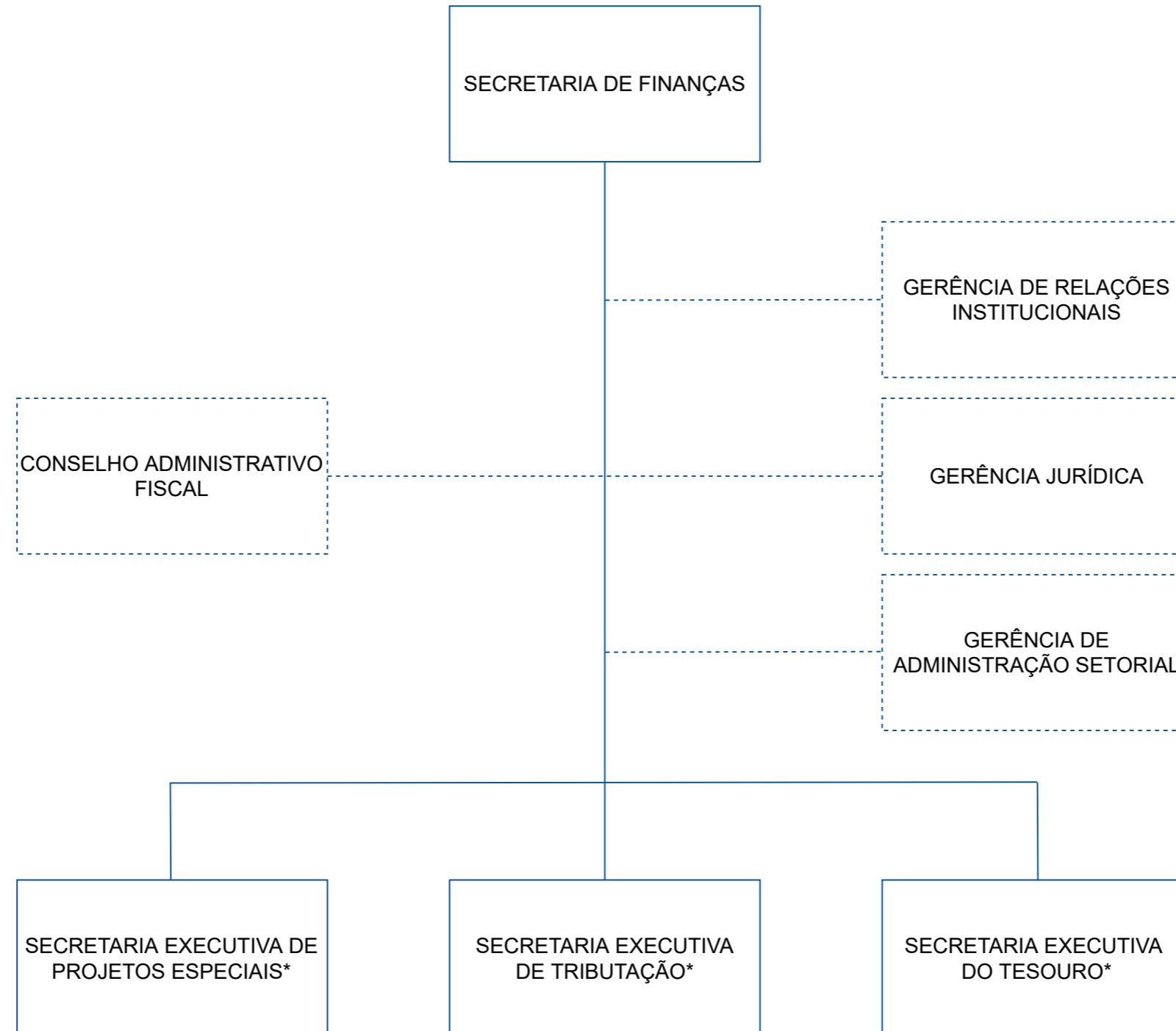
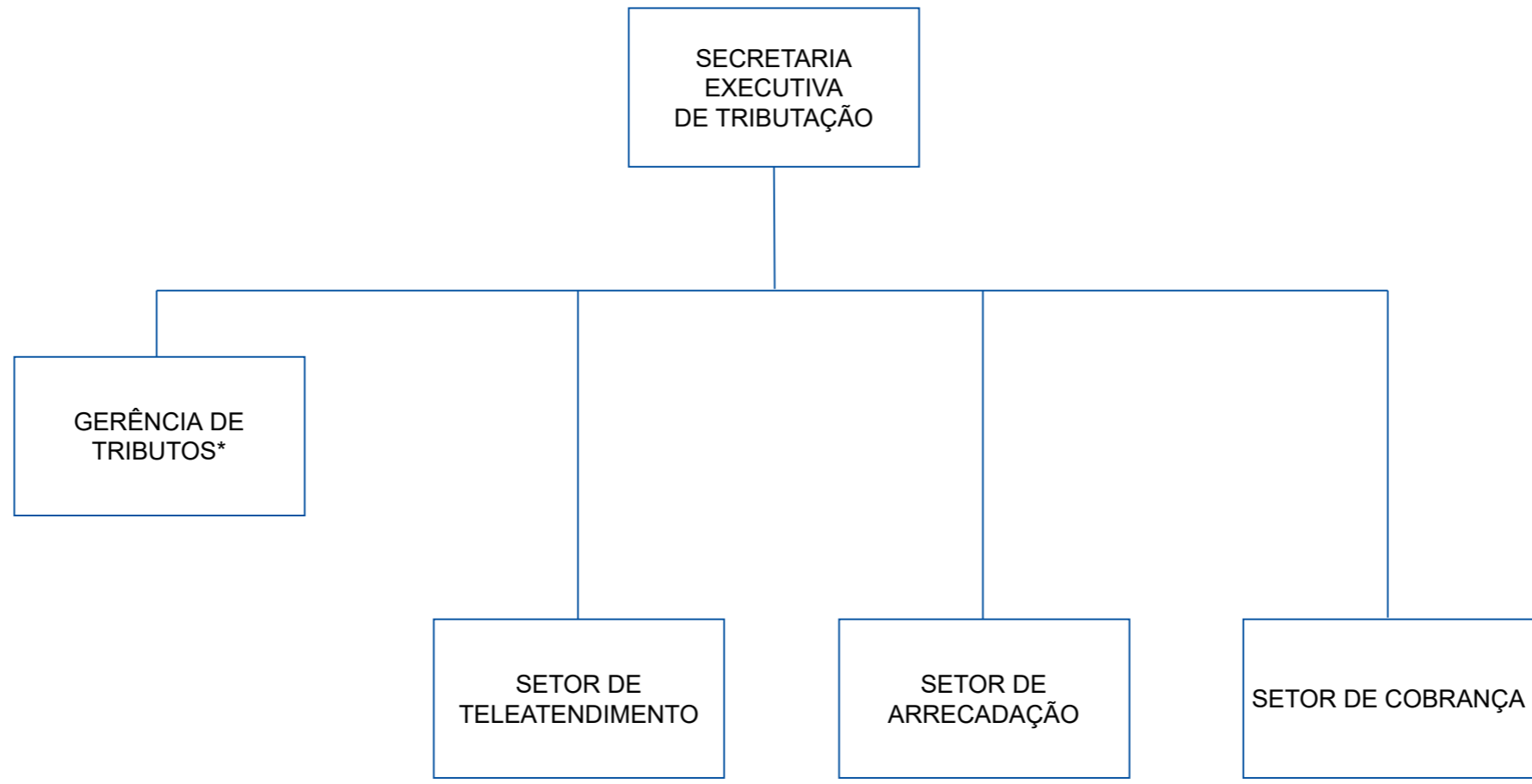


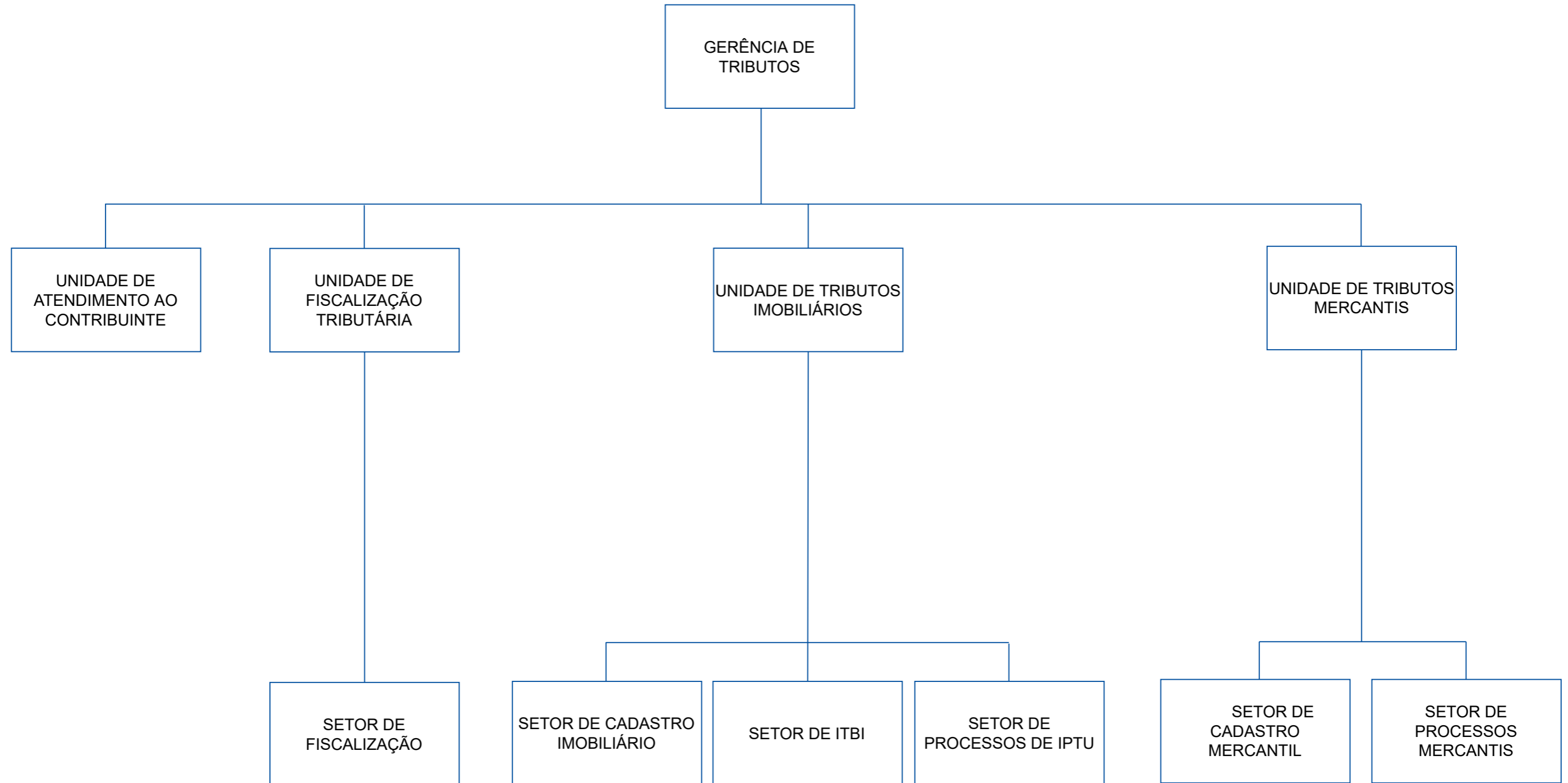
SECRETARIA DE FINANÇAS



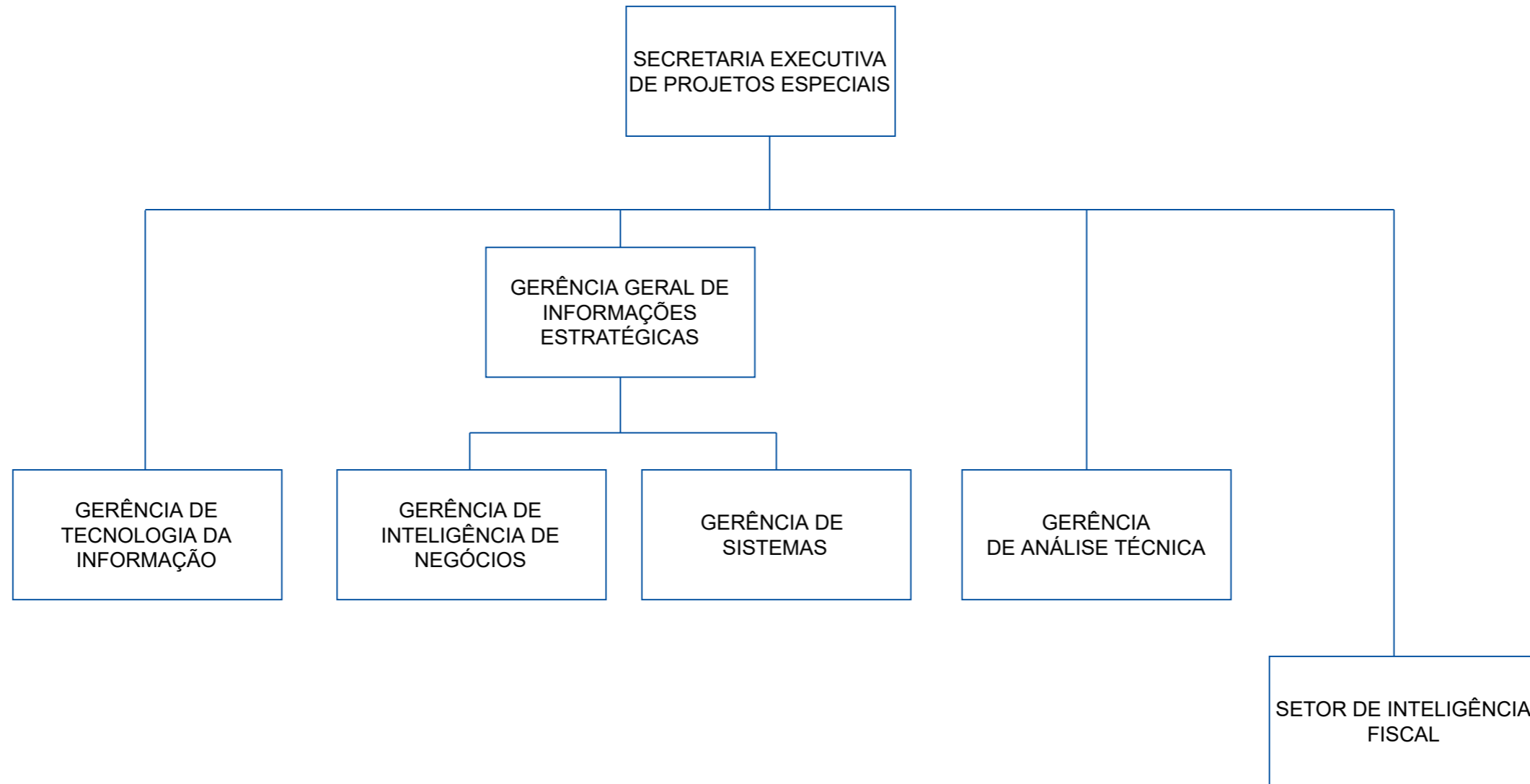
SECRETARIA EXECUTIVA DE TRIBUTAÇÃO



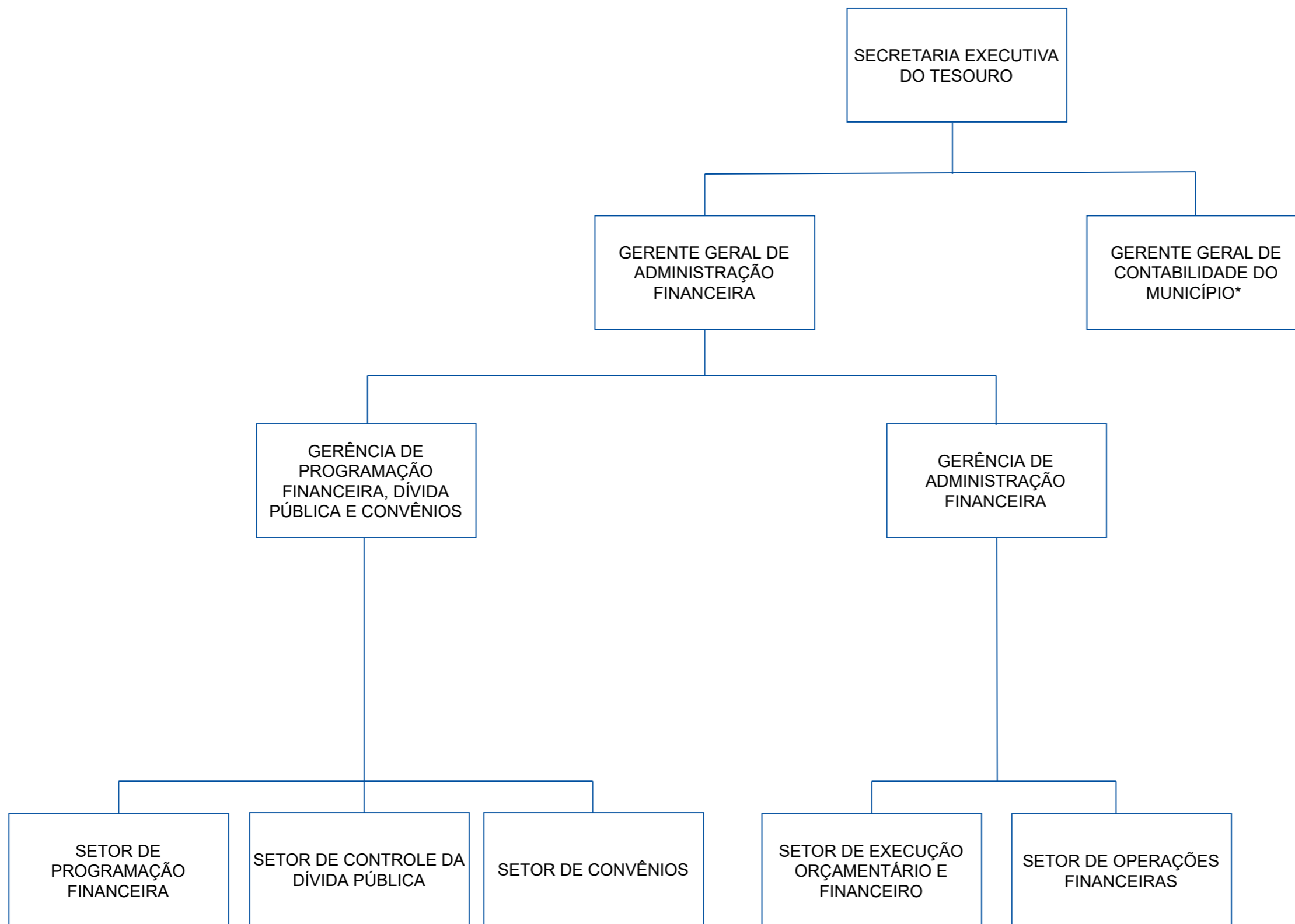
GERÊNCIA DE TRIBUTOS



SECRETARIA EXECUTIVA DE PROJETOS ESPECIAIS



SECRETARIA EXECUTIVA DO TESOURO



GERENTE GERAL DE CONTABILIDADE DO MUNICÍPIO

